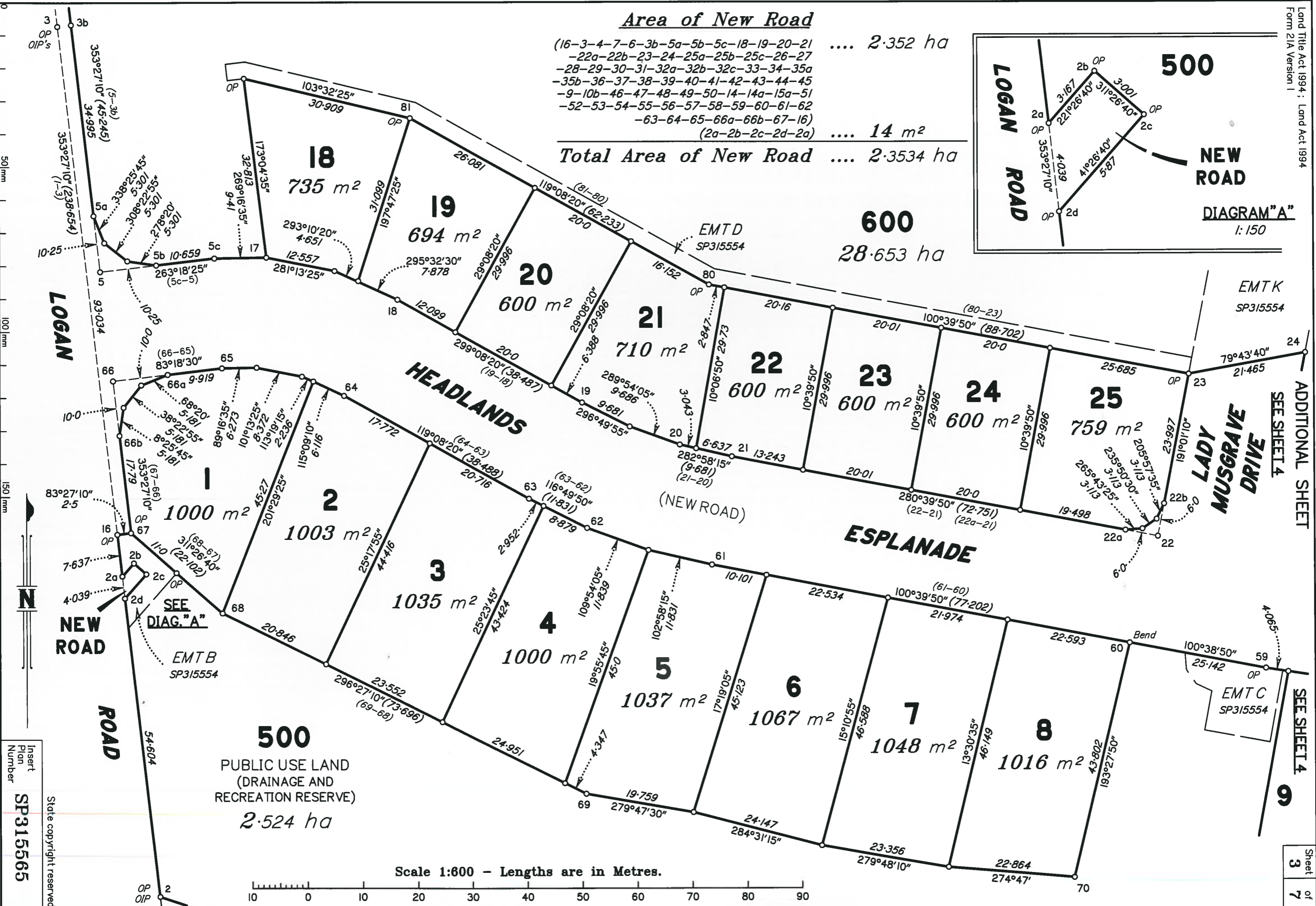
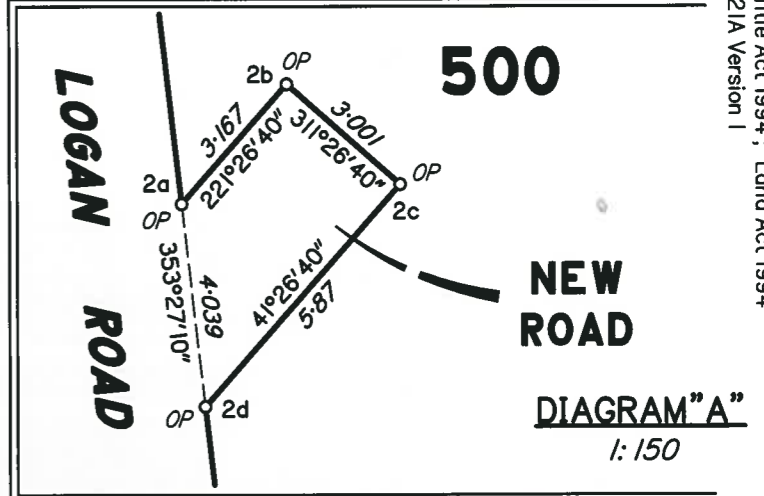


**Area of New Road**

(16-3-4-7-6-3b-5a-5b-5c-18-19-20-21 .... 2.352 ha  
 -22a-22b-23-24-25a-25b-25c-26-27  
 -28-29-30-31-32a-32b-32c-33-34-35a  
 -35b-36-37-38-39-40-41-42-43-44-45  
 -9-10b-46-47-48-49-50-14-14a-15a-51  
 -52-53-54-55-56-57-58-59-60-61-62  
 -63-64-65-66a-66b-67-16)  
 (2a-2b-2c-2d-2a) .... 14 m<sup>2</sup>

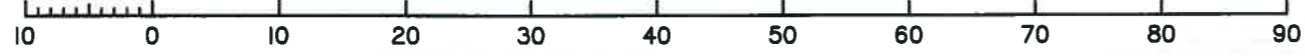
**Total Area of New Road .... 2.3534 ha**



Insert Plan Number  
**SP315565**

State copyright reserved.

Scale 1:600 - Lengths are in Metres.



SEE SHEET 4  
ADDITIONAL SHEET

SEE SHEET 4  
6

EMTK  
SP315554

EMTC  
SP315554

EMTB  
SP315554

**500**  
PUBLIC USE LAND  
(DRAINAGE AND  
RECREATION RESERVE)  
2.524 ha

SEE  
DIAG. "A"

SEE  
DIAG. "A"

**NEW ROAD**

**LOGAN ROAD**

**LADY MUSGRAVE DRIVE**

**NEW ROAD**

**500**

**DIAGRAM "A"**  
1:150

**600**  
28.653 ha

**18**  
735 m<sup>2</sup>

**19**  
694 m<sup>2</sup>

**20**  
600 m<sup>2</sup>

**21**  
710 m<sup>2</sup>

**22**  
600 m<sup>2</sup>

**23**  
600 m<sup>2</sup>

**24**  
600 m<sup>2</sup>

**25**  
759 m<sup>2</sup>

**1**  
1000 m<sup>2</sup>

**2**  
1003 m<sup>2</sup>

**3**  
1035 m<sup>2</sup>

**4**  
1000 m<sup>2</sup>

**5**  
1037 m<sup>2</sup>

**6**  
1067 m<sup>2</sup>

**7**  
1048 m<sup>2</sup>

**8**  
1016 m<sup>2</sup>

**HEADLANDS**

**ESPLANADE**

(NEW ROAD)

**9**

SEE SHEET 4

SEE SHEET 4

EMTK  
SP315554

EMTC  
SP315554

EMTB  
SP315554

**500**  
PUBLIC USE LAND  
(DRAINAGE AND  
RECREATION RESERVE)  
2.524 ha

SEE  
DIAG. "A"

SEE  
DIAG. "A"

**NEW ROAD**

**LOGAN ROAD**

**LADY MUSGRAVE DRIVE**

**NEW ROAD**

**500**

**DIAGRAM "A"**  
1:150

**600**  
28.653 ha

**18**  
735 m<sup>2</sup>

**19**  
694 m<sup>2</sup>

**20**  
600 m<sup>2</sup>

**21**  
710 m<sup>2</sup>

**22**  
600 m<sup>2</sup>

**23**  
600 m<sup>2</sup>

**24**  
600 m<sup>2</sup>

**25**  
759 m<sup>2</sup>

**1**  
1000 m<sup>2</sup>

**2**  
1003 m<sup>2</sup>

**3**  
1035 m<sup>2</sup>

**4**  
1000 m<sup>2</sup>

**5**  
1037 m<sup>2</sup>

**6**  
1067 m<sup>2</sup>

**7**  
1048 m<sup>2</sup>

**8**  
1016 m<sup>2</sup>

**HEADLANDS**

**ESPLANADE**

(NEW ROAD)

**9**

SEE SHEET 4

SEE SHEET 4

EMTK  
SP315554

EMTC  
SP315554

EMTB  
SP315554

**500**  
PUBLIC USE LAND  
(DRAINAGE AND  
RECREATION RESERVE)  
2.524 ha

SEE  
DIAG. "A"

SEE  
DIAG. "A"

**NEW ROAD**

**LOGAN ROAD**

**LADY MUSGRAVE DRIVE**

**NEW ROAD**

**500**

**DIAGRAM "A"**  
1:150

**600**  
28.653 ha

**18**  
735 m<sup>2</sup>

**19**  
694 m<sup>2</sup>

**20**  
600 m<sup>2</sup>

**21**  
710 m<sup>2</sup>

**22**  
600 m<sup>2</sup>

**23**  
600 m<sup>2</sup>

**24**  
600 m<sup>2</sup>

**25**  
759 m<sup>2</sup>

**1**  
1000 m<sup>2</sup>

**2**  
1003 m<sup>2</sup>

**3**  
1035 m<sup>2</sup>

**4**  
1000 m<sup>2</sup>

**5**  
1037 m<sup>2</sup>

**6**  
1067 m<sup>2</sup>

**7**  
1048 m<sup>2</sup>

**8**  
1016 m<sup>2</sup>

**HEADLANDS**

**ESPLANADE**

(NEW ROAD)

**9**

SEE SHEET 4

SEE SHEET 4

EMTK  
SP315554

EMTC  
SP315554

EMTB  
SP315554

**500**  
PUBLIC USE LAND  
(DRAINAGE AND  
RECREATION RESERVE)  
2.524 ha

SEE  
DIAG. "A"

SEE  
DIAG. "A"

**NEW ROAD**

**LOGAN ROAD**

**LADY MUSGRAVE DRIVE**

**NEW ROAD**

**500**

**DIAGRAM "A"**  
1:150

**600**  
28.653 ha

**18**  
735 m<sup>2</sup>

**19**  
694 m<sup>2</sup>

**20**  
600 m<sup>2</sup>

**21**  
710 m<sup>2</sup>

**22**  
600 m<sup>2</sup>

**23**  
600 m<sup>2</sup>

**24**  
600 m<sup>2</sup>

**25**  
759 m<sup>2</sup>

**1**  
1000 m<sup>2</sup>

**2**  
1003 m<sup>2</sup>

**3**  
1035 m<sup>2</sup>

**4**  
1000 m<sup>2</sup>

**5**  
1037 m<sup>2</sup>

**6**  
1067 m<sup>2</sup>

**7**  
1048 m<sup>2</sup>

**8**  
1016 m<sup>2</sup>

**HEADLANDS**

**ESPLANADE**

(NEW ROAD)

**9**

SEE SHEET 4

SEE SHEET 4

EMTK  
SP315554

EMTC  
SP315554

EMTB  
SP315554

**500**  
PUBLIC USE LAND  
(DRAINAGE AND  
RECREATION RESERVE)  
2.524 ha

SEE  
DIAG. "A"

SEE  
DIAG. "A"

**NEW ROAD**

**LOGAN ROAD**

**LADY MUSGRAVE DRIVE**

**NEW ROAD**

**500**

**DIAGRAM "A"**  
1:150

**600**  
28.653 ha

**18**  
735 m<sup>2</sup>

**19**  
694 m<sup>2</sup>

**20**  
600 m<sup>2</sup>

**21**  
710 m<sup>2</sup>

**22**  
600 m<sup>2</sup>

**23**  
600 m<sup>2</sup>

**24**  
600 m<sup>2</sup>

**25**  
759 m<sup>2</sup>

**1**  
1000 m<sup>2</sup>

**2**  
1003 m<sup>2</sup>

**3**  
1035 m<sup>2</sup>

**4**  
1000 m<sup>2</sup>

**5**  
1037 m<sup>2</sup>

**6**  
1067 m<sup>2</sup>

**7**  
1048 m<sup>2</sup>

**8**  
1016 m<sup>2</sup>

**HEADLANDS**

**ESPLANADE**

(NEW ROAD)

**9**

SEE SHEET 4

SEE SHEET 4

EMTK  
SP315554

EMTC  
SP315554

EMTB  
SP315554

**500**  
PUBLIC USE LAND  
(DRAINAGE AND  
RECREATION RESERVE)  
2.524 ha

SEE  
DIAG. "A"

SEE  
DIAG. "A"

**NEW ROAD**

**LOGAN ROAD**

**LADY MUSGRAVE DRIVE**

**NEW ROAD**

**500**

**DIAGRAM "A"**  
1:150

**600**  
28.653 ha

**18**  
735 m<sup>2</sup>

**19**  
694 m<sup>2</sup>

**20**  
600 m<sup>2</sup>

**21**  
710 m<sup>2</sup>

**22**  
600 m<sup>2</sup>

**23**  
600 m<sup>2</sup>

**24**  
600 m<sup>2</sup>

**25**  
759 m<sup>2</sup>

**1**  
1000 m<sup>2</sup>

**2**  
1003 m<sup>2</sup>

**3**  
1035 m<sup>2</sup>

**4**  
1000 m<sup>2</sup>

**5**  
1037 m<sup>2</sup>

**6**  
1067 m<sup>2</sup>

**7**  
1048 m<sup>2</sup>

**8**  
1016 m<sup>2</sup>

**HEADLANDS**

**ESPLANADE**

(NEW ROAD)

**9**

SEE SHEET 4

SEE SHEET 4

EMTK  
SP315554

EMTC  
SP315554

EMTB  
SP315554

**500**  
PUBLIC USE LAND  
(DRAINAGE AND  
RECREATION RESERVE)  
2.524 ha

SEE  
DIAG. "A"

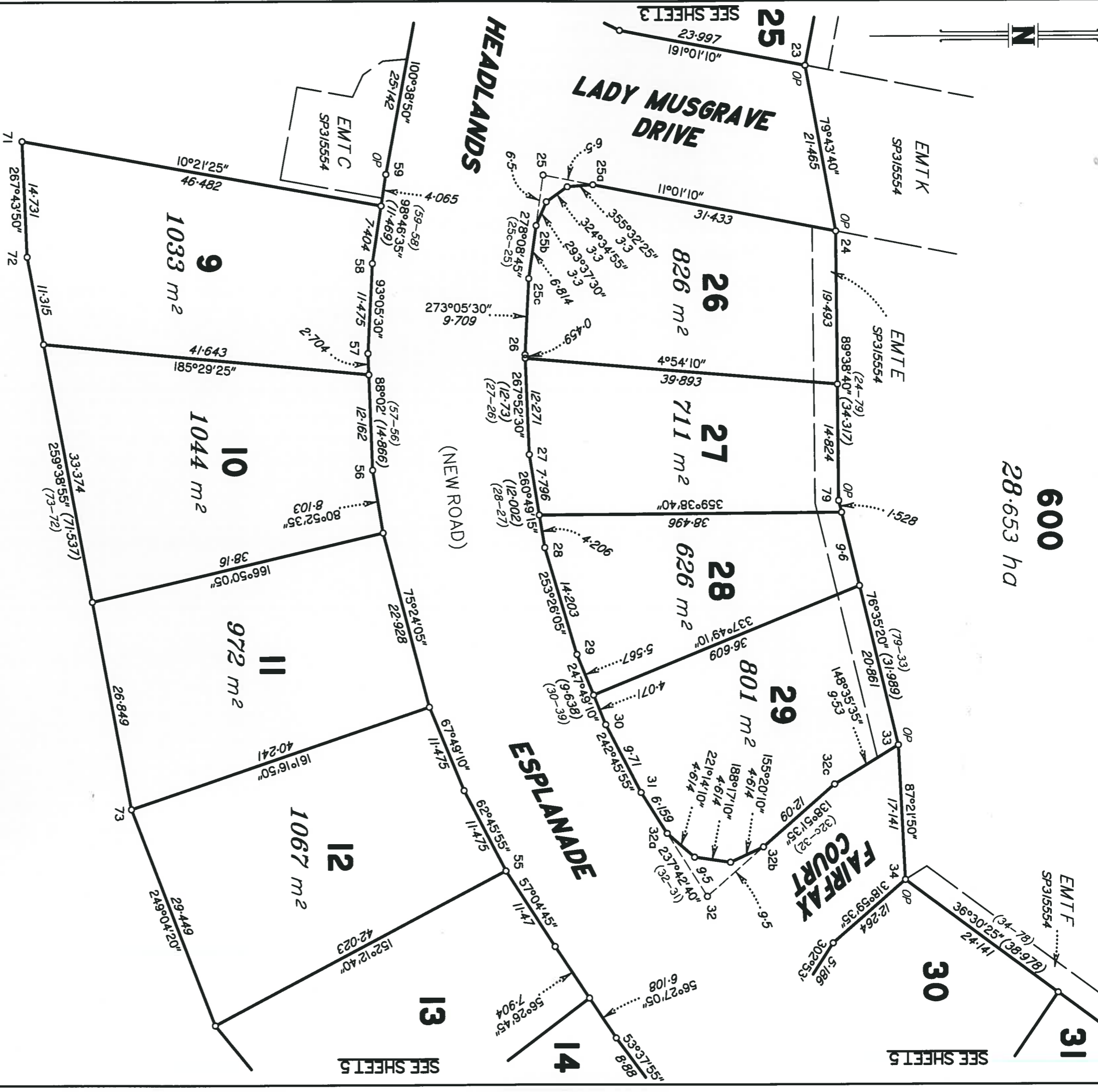
SEE  
DIAG. "A"

**NEW ROAD**

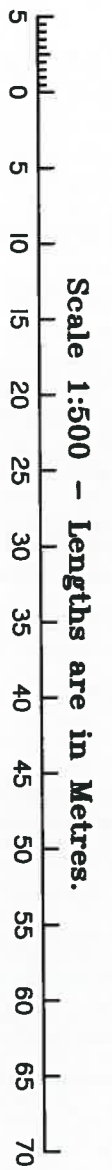
**LOGAN ROAD**

**LADY MUSGRAVE DRIVE**

**NEW ROAD**



**500**  
PUBLIC USE LAND  
(DRAINAGE AND  
RECREATION RESERVE)  
2.524 ha



Insert  
Plan  
Number  
**SP315565**

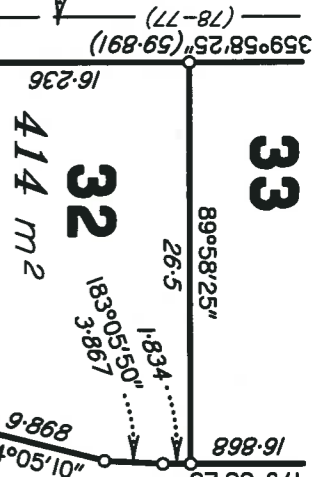
State copyright reserved.

**600**  
28.653 ha

EMTF  
SP315554

**33**

SEE SHEET 6



**32**  
414 m<sup>2</sup>

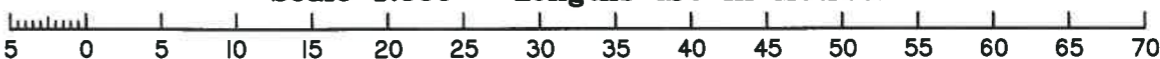
EMTF  
SP315554

**31**  
500 m<sup>2</sup>

**ESPLANADE**

3  
SP182595

Scale 1:500 - Lengths are in Metres.



**29**

SEE SHEET 4

**FAIRFAX COURT**

(NEW ROAD)

**30**  
613 m<sup>2</sup>

**HEADLANDS**

**14**  
586 m<sup>2</sup>

**15**  
641 m<sup>2</sup>

**16**  
575 m<sup>2</sup>

**17**  
906 m<sup>2</sup>

0.395 clear  
of boundary

**12**

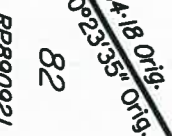
**13**  
917 m<sup>2</sup>

SEE SHEET 4

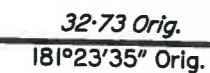
**500**

PUBLIC USE LAND  
(DRAINAGE AND  
RECREATION RESERVE)  
2.524 ha

SEE SHEET 1



82  
RP890921



87  
RP150263



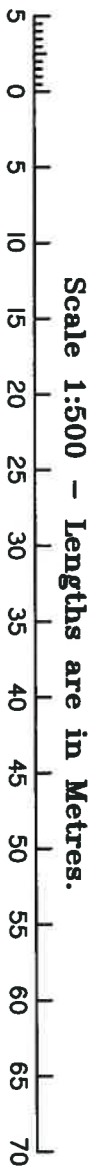
88  
RP150263



89  
RP150263

Insert  
Plan  
Number  
**SP315565**

State copyright reserved.

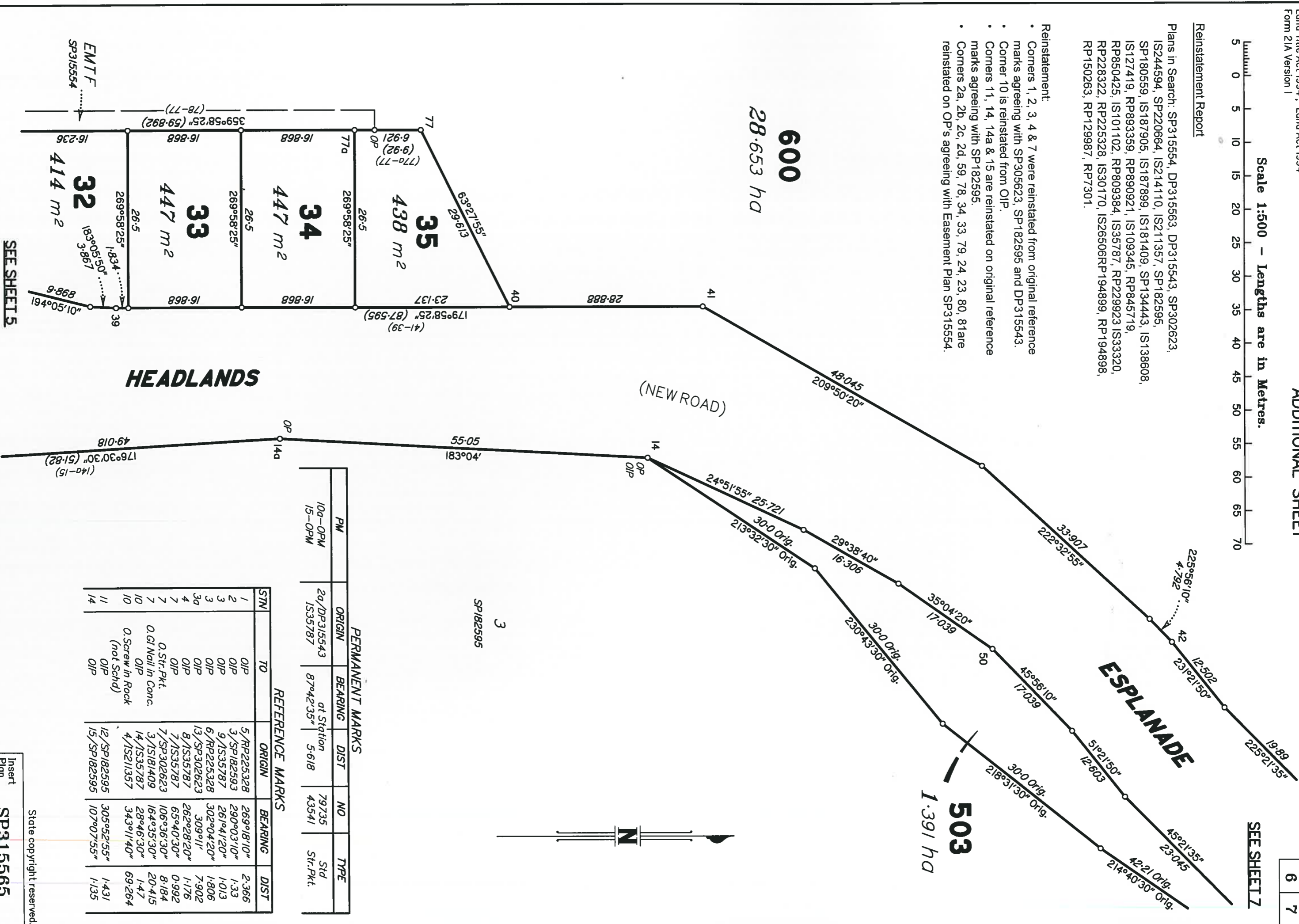


Reinstatement Report

Plans in Search: SP315554, DP315563, DP315543, SP302623, IS244594, SP220664, IS214110, IS211357, SP182595, SP180559, IS187905, IS187899, IS181409, SP134443, IS138608, IS127419, RP893359, RP890921, IS109345, RP845719, RP850425, IS101102, RP809384, IS35787, RP229923 IS33320, RP228322, RP225328, IS30170, IS26506RP194899, RP194898, RP150263, RP129987, RP7301.

Reinstatement:

- Corners 1, 2, 3, 4 & 7 were reinstated from original reference marks agreeing with SP305623, SP182595 and DP315543.
- Corner 10 is reinstated from OIP.
- Corners 11, 14, 14a & 15 are reinstated on original reference marks agreeing with SP182595.
- Corners 2a, 2b, 2c, 2d, 59, 78, 34, 39, 79, 24, 23, 80, 81 are reinstated on OP's agreeing with Easement Plan SP315554.



PERMANENT MARKS

PM	ORIGIN	BEARING	DIST	NO	TYPE
10a-OPM	2a/DP315543	at Station	5.618	79735	Std
15-OPM	IS35787	87°42'35"		43541	Str.Pkt.

REFERENCE MARKS

STN	TO	ORIGIN	BEARING	DIST
1	OIP	5/RP225328	269°18'10"	2.386
2	OIP	3/SP182593	290°03'10"	1.33
3	OIP	9/IS35787	261°41'20"	1.013
3	OIP	6/RP225328	302°04'20"	1.806
3a	OIP	13/SP302623	309°11"	7.902
4	OIP	8/IS35787	262°28'20"	1.176
7	OIP	7/IS35787	65°40'30"	0.992
7	O.Str.Pkt.	7/SP302623	106°36'30"	8.184
7	O.GI Nail in Conc.	3/IS181409	164°35'30"	20.415
10	OIP	14/IS35787	28°46'30"	1.47
10	O.Screw in Rock (not Schd)	4/IS211357	343°11'40"	69.264
11	OIP	12/SP182595	305°52'55"	1.431
14	OIP	15/SP182595	107°07'55"	1.135

SEE SHEET 5

SEE SHEET 7

State copyright reserved.

Insert Plan Number  
**SP315565**